

ABOX-E7S

High performance Industrial Box Computer

Intel 6/7th I7/I5/I3 Desktop multi-core processors, with PCIe and MXM expansion

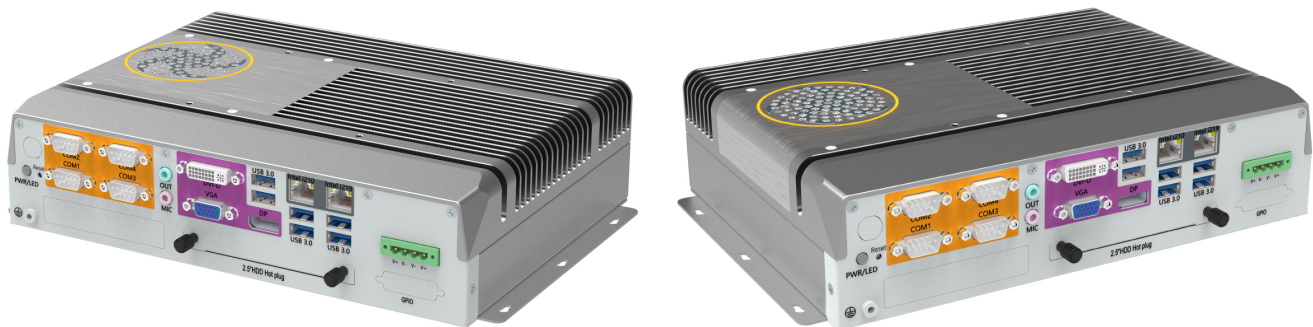
Specification

V2.0

Key features:

- ◆ Support Intel® 6/7th Core™ i7/i5/i3 Desktop processors;
- ◆ Q170 industrial chipset;
- ◆ 2x DDR4 SO-DIMM, max. up to 32GB, dual channel support;
- ◆ 3x Display interface;
- ◆ Max. expansion up to 10 USB ports;
- ◆ Max. expansion up to 6 Intel RJ45 ports;
- ◆ Max. expansion up to 6 serial ports;
- ◆ Support 3 kinds of hard disk storage;
- ◆ Support 18~36V DC power supply.

Product Image

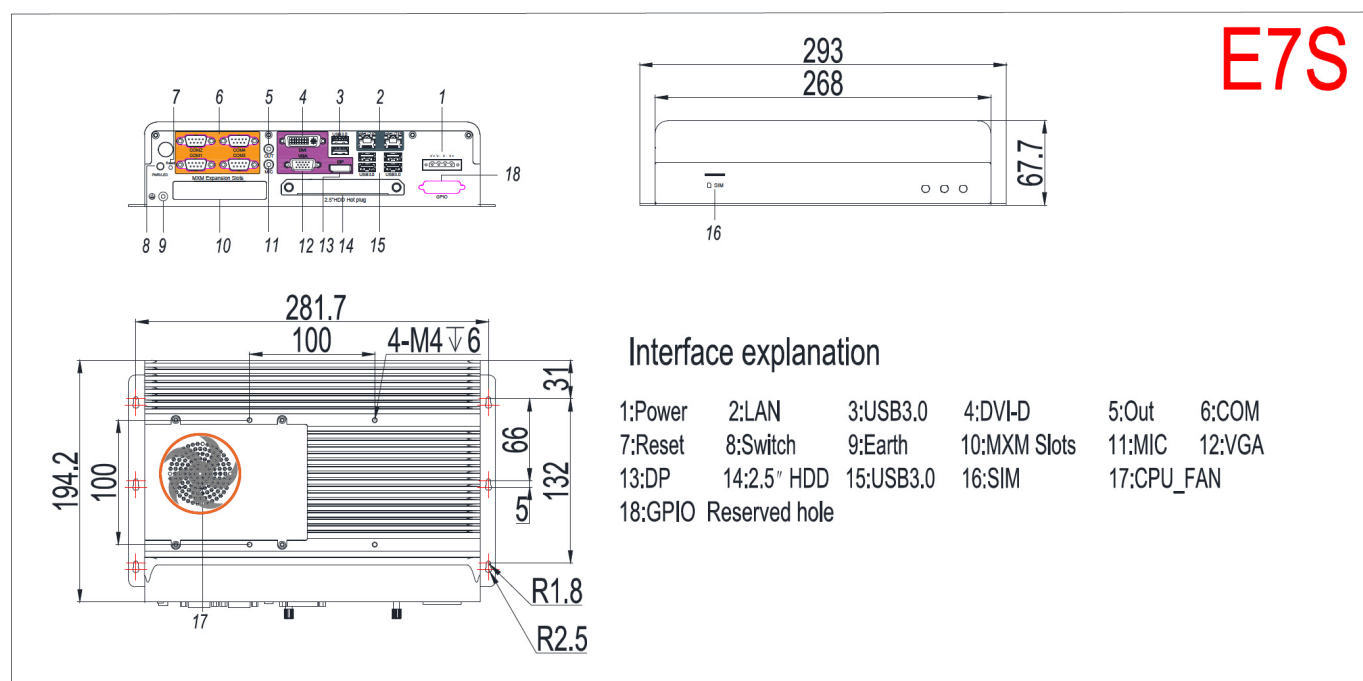


Specification parameter

System		
Processor	CPU	Intel® 6/7th Core™ i3/i5/i7 Desktop LGA1151 CPU, TDP=65W (PWM intelligent fan active heat dissipation)
	Chipset	Intel® Q170 Chipset
	BIOS	AMI SPI 64Mb, support ACPI, CPU temperature, system voltage monitoring
Memory	Interface	2 x DDR4 SO-DIMM, @1.2V, 1866/2133/2400/2666 MHz
	Capacity	Max. single RAM up to 16G, dual channels, expansion up to 32GB
Storage	Interface	1 x 2.5" HDD, support 5~9.5mm, hot pluggable
		1 x 2.5" HDD, support 5~9.5mm, internal
		1 x M.2 SATA 3.0 (22*42mm), Internal
Display	Chipset	CPU Integrated Intel® HD Graphics, support DirectX12
	Ports	1 x DP (Max. support resolution:4096x2304 x24bpp, @ 60Hz)
		1 x DVI-D (Max. support resolution: 1920x1200, @30Hz)
Network	Wireless	1 x VGA (Max. support resolution: 2048x1536)
		2 x Intel® Ethernet Connection; LAN1: I210-AT, LAN2: I219-LM, support WOL
	Wireless	1 x Mini-PCIE (Half/Full, support 802.11 b/g/n, 3G/4G Optional) 1 x SIM slot
AUDIO	Chipset	Realtek ALC662VD
	Ports	1 x Mic-in + 1 x Audio-out
I/O	USB	6 x USB 3.0
	COM	4 x DB9 RS232 (COM1/COM2 support RS485/RS422/RS232, BIOS controllable)
Expansion I/O	Front signal	1x 6pin front panel controlled signal
	Watchdog	1 x Internal USB 2.0 (optional)
	COM	2 x 9pin COM pin-header (S232)
	GPIO	8 x GPIO (4 in 4 out, DI low level, DO high level, DI/DO BIOS configurable, Optional)
		8 x GPIO (4 in 4 out, photoelectric isolated, 5V~40V wide voltage input, OMRON relay output, DB25, optional)
Power	PCIe	1 x MXM 3.0 (support 4x GigE)
	Type	DC
	Ports	1 x 4pin 5.08 phoenix terminal, with hole lock
LED/Switch	Input	18~36V, power consumption max. up to 240W
	Power on	1 x power on button (Including status LED light)
Watchdog	Reset	1 x reset/reboot button (Long press>3s when power off, clear CMOS; press 0.2~1s when power on)
		Programmable 255 seconds
OS	version	6th Core™: Windows 7/8.1/10 32 bits/64 bits, Linux
		7th Core™: Windows 7/8.1/10 64 bits, Linux
RAID	Mode	0, 1
Structure		
Treatment	Hard anodizing treatment, scratch resistant	

Color	Iron grey, industrial grey color
Cooling	PWM intelligent fan active heat dissipation
Weight	4.18kg
Dimension	268mm(L) x 194.2mm(W) x 67.7mm(H)
Mounting	Desktop, wall mount, VESA mount
Fan	2x 4010 temperature controlled fan
Environmental	
Operating temp.	Operating temp.: -20~60°C (industrial SSD); Operating temp.: 0~40°C (commercial HDD)
Storage	-40~80°C
Humidity	10%~90%@40°C (non-condensation)
Vibration	SSD : 3Grms@5~500Hz , random , 1 hr/axis ; 2.5" HDD : 1Grms@5~500Hz , random , 1 hr/axis
Shock	10G/peak (11ms/sec)

Interface and Dimension



TAICENN, is a leading global **solution provider** of Embedded Box IPC, Touch panel IPC and industrial monitor, which are designed specifically for systems and applications that require excellent performance, high-level reliability and stability, long supply period and supports.

The information in this specification is subject to change without notice

All parts of TAICENN Technology documentation are protected by copyright law and all rights are reserved. This documentation may not, in whole or in part, be copied, photocopied, reproduced, translated, or reduced to any electronic medium or machine-readable form without prior consent, in writing, from TAICENN Technology.